



Supported by Loma Linda University



### How to Apply

Email or fax a completed application with all required attachments by:

**July 1, 2011**, to:

**BLU Educational Foundation**

E-mail: [info@bluedfoundation.org](mailto:info@bluedfoundation.org)

Fax: 909.820.2827



600 N. Arrowhead Ave. Ste. 300

San Bernardino, CA 92401

Phone: 909.888.7881 x253

[www.bluedfoundation.org](http://www.bluedfoundation.org)



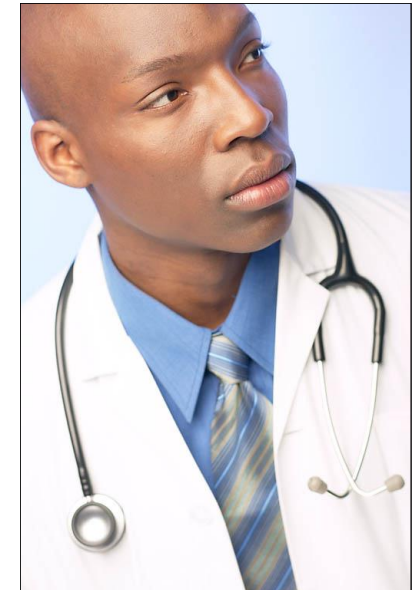
*A uniquely designed learning opportunity focusing on African American students awaits you.*

*Enroll Today!*

### About Us

BLU Educational Foundation's (BLU) programs and activities primarily serve African American and Latino populations in the cities of Fontana, San Bernardino, Rialto, Rancho Cucamonga and surrounding areas. Currently, BLU's active programs include the College Exodus Project, the Male Involvement Program, Healthy Sisters, Healthy Lives and Parents & Communities Engaged in Education.

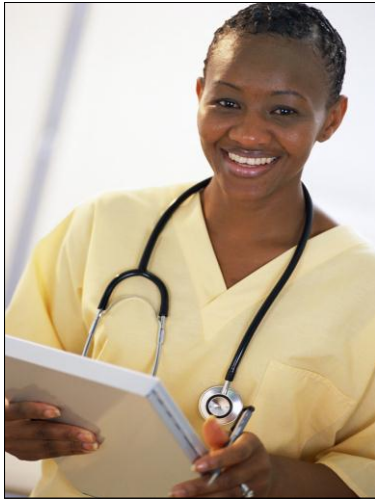
### College Exodus to Health Professions



### Summer Enrichment Program

Introducing  
**African American Students**  
to the Amazing World  
of Health Sciences and its  
possibilities

## College Exodus to Health Professions



*Students are introduced to exciting careers in the medical field*

### Project Overview

The College Exodus to Health Professions (CEHP) is a comprehensive, three to four-year program for high school students providing academic preparation and support, exposure to the health care professions, college application and college enrollment assistance. The CEHP specifically focuses on African American high school students in the Inland Empire and surrounding areas.

### Program Components

This summer, participating students will experience one week on the campus of Loma Linda University (LLU) and take part in the following:

- An interactive learning environment highlighting the importance of patient care
- An introduction to the various components of health sciences research and laboratory studies
- Participation and exposure to the medical center and patient care areas with health professionals
- Active participation in a learning and study skills program
- Daily lunch, refreshments and snacks

**Transportation to and from Loma Linda University is the responsibility of the student or their parent/guardian**

### Registration

- **Early Bird Registration \$100**  
**April 15-June 1**
- **Late Registration \$150**  
**June 2 – July 1**

\*All selected candidates must provide **\$50 deposit** to secure space for program

\*Registration must be paid in full by **July 8, 2011.**

### Selection Criteria

- 9<sup>th</sup> – 12<sup>th</sup> Grade High School Students (Priority given to Juniors and Seniors)
- Good academic standing; Overall 2.0 GPA or above
- Interest in health, science and math courses
- Participation in leadership, school activities and community services
- Written essay describing themselves and their interest in a career in the Health Professions

### Program Dates\*

**July 18 – July 22, 2011**

Monday-Thursday 8:00am-6:00pm

Friday 8:00am-2:00pm

**July 13, 2011 (Orientation)**

Wednesday 6:30pm-8:00pm

**July 24, 2011 (Graduation)**

Sunday 5:00pm-7:00pm

### How to Apply

Email or fax a completed application with all required attachments, no later than **July 1, 2011 to:**

**BLU Educational Foundation**

[info@bluedfoundation.org](mailto:info@bluedfoundation.org)

909.820.2827 fax

**Need-based Registration Scholarships are available!**